

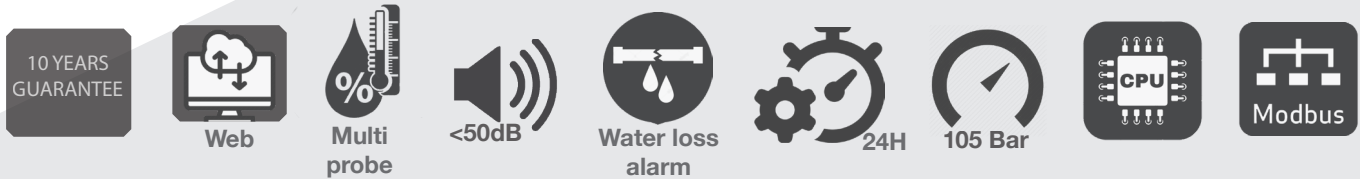
HPro SERIES

E304 | E298 | E299 | E300

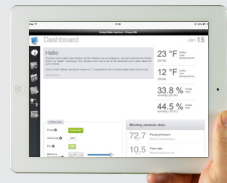


Designed for industrial or business environments the HPro Misting module provides for precise solutions for installation of medium and large dimension. The patented mechanics with axial cam combined with a high efficiency pumping unit is supported by

electronic management by means of a further enhanced Soft Touch electronic board. The unit is contained in a AISI 304 stainless steel chassis equipped with a cooling fan.

EDDY 5
CONTROL PANEL

REMOTE PANELS OVER IP

WEB INTERFACE
CONTROL BY TABLET
PC AND SMARTPHONERJ45 ETHERNET
PLUG

DIG. PRESSURE READER

HIGH PRESSURE RELEASE
SOLENOID VALVE

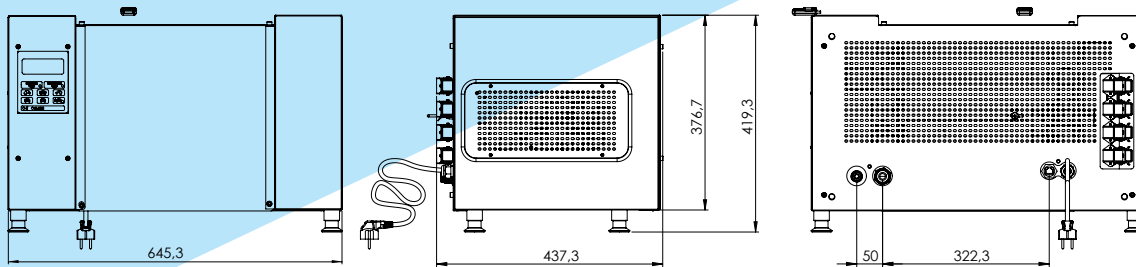
NEW
DRAIN
BUILT-IN SYSTEM
NOT NEED
EXTERNAL
DISCHARGE

AXA SIMMM PUMP
900 RPM MOTOR < 50 dB

DIG. FLOW RATE MEETER

INSIDE COOLING FAN (2)

RO SYSTEM AND REMOTE
ON/OFF CONTROLSOCKETMODBUS RS485
DIGITAL INTERFACERADIO REMOTE CONTROL
ON/OFF PUMP AND FANFANS SOCHET
(230/115 VOLT - 10 AMPS)HUMIDITY/TEMPERATURE PROBE
MAX 4 WITH MULTI READING



TECHNICAL DATA

- SIMMM pump AXA model with no overheating system (CE approved)
- Patented flow rate valve (large range of nozzle numbers with the same model)
- Max working pressure up to 105 Bar
- Professional gauge
- Water seals in viton
- Safety water pressure switch
- High pressure release solenoid valve
- "H" class motor with low speed (900 rpm)
- Lowest noise level 50 dB
- Low voltage control panel (12 volt)
- Radio remote control
- Digital cycling timer
- Digital water litre counter
- Digital pressure reader
- Temperature and humidity program
- Weekly timer
- Control via LAN, by any smartphone, tablet, PC or Mac
- Digital alarms with display warning message sent by SM or by Email
- Washing line high pressure solenoid valve
- Automatic fan On/Off switch (230 volt plug built-in)
- Auto program "A" adjusting the cooling power based on temperature
- Auto program "B" adjusting the cooling power based on humidity
- Auto program "C" humidity management from
- Auto program "D" humidity management with AHU control
- Self-diagnosis
- Soft touch panel
- Notification program (with alert by email or sms)
- Soft start to reduce start-up current
- Anti-Legionella Pneumophila automatic system equipped with certified products
- Built-in cooling fan
- Reverse Osmosis connection socket
- Remote on/off control
- Multiple control panels over IP ethernet connections
- Datalogger of all the pump parameters
- Firmware update
- Remote on/off control
- Alarms database record (last 10 alarms)
- Digital alarms with display warning message sent by SMS or by Email:
 - Water Loss
 - High pressure water leaking
 - Pump overheating
 - Motor overload
 - Maintenance time notification (oil change, seals check etc..)
 - Low/max flow rate
 - Low temperature in the pipes (Ice)
- Remote access capability: from any tablet, computer is possible manage the pumps everywhere thanks to internal GPRS module
- Modbus rs 485 (bms) communication protocols
- Simultaneous Temp/hum probes connection (max 4) for a better humidification
- In line 0-10 input for UTA control
- Out connection for siren or light in case of alarm
- 4 different automatic programs for cooling and humidity control

MODEL	E304	E298	E299	E300
PRESSIONE (BAR)	70-105	70-105	70/105	70/105
NOZZLES NUMBER (0.2 MM)	5-40	30-70	50-100	100-210
PUMP	SIMMM AXA	SIMMM AXA	SIMMM AXA	SIMMM AXA
MIN FLOW RATE (LT/MIN)	0.5	2.5	3.9	7.8
MAX FLOW RATE (LT/MIN)	3.5	6	7.8	18
MOTOR SPEED (RPM)	900	900	900	1.450
VOLTAGE (VOLT)	230/115 50/60 Hz.*	230/115 50/60 Hz.*	230/115 50/60Hz.*	230/115 50/60Hz.*
POWER (KW/H)	0.92	0.92	2.60	2.90
MAX DAILY USE (HOURS)	24	24	24	24
WEIGHT (KG)	36	36	36	36
DIMENSIONS LXHXP (CM)	65x44x42	65x44x42	65x44x42	65x44x42

* ON REQUEST